



# Full Integration of DKIM, Sender ID, DomainKeys...

Secure, Reliable, Easy Email

## Easy to Learn, Use and Grow

MDaemon provides professional email services and security for enterprises with little or no professional IT support.

Using and surpassing the industry standards, every MDAemon comes with web mail, POP3, MultiPOP, SMTP and List servers. The Pro version adds services for IMAP, Groupware, MultiPOP, AntiSpam, Free/Busy Scheduling and SyncML.

white lists.

MDaemon is so skilled at stopping unauthorized access some enterprises use it as a security gateway for less secure email systems.

## Easy and Professional

With its intelligent defaults, MDAemon can be up and running in 10 minutes. Yet, it also comes with all of the professional controls required for fine-tuning small, large or specialized applications.

MDaemon features include:

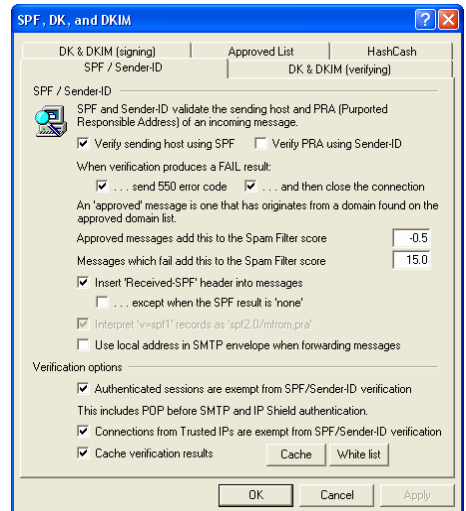
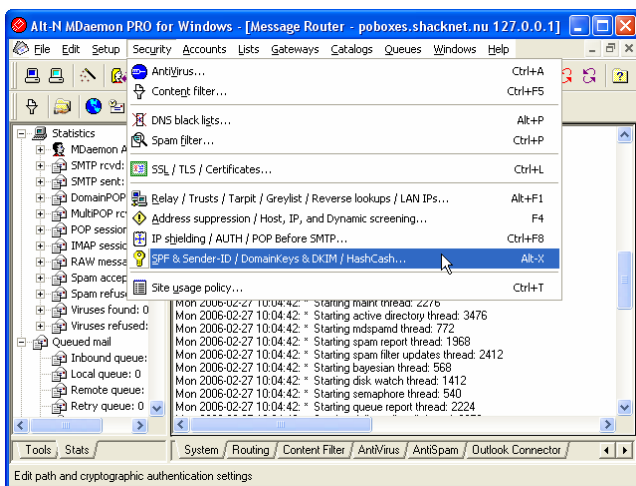
- Multiple domains.
- Message archiving.
- Accounts and aliases
- Web mail in more than 25 languages.
- Web based configuration tools for administrators and users.
- User account self-management through web administration and email.

- Administration GUI localized in English, French, German, Italian, Japanese, Portuguese and Spanish.

## Who Uses MDAemon

MDaemon makes economic sense for installations with one, six, 100, 1,000 or more users:

- Small and large businesses.
- Internet service providers.
- Hospitals and doctor offices.
- Charities, schools and school districts.
- Professional athletic teams.
- Government agencies.
- Individuals.



## Emphasizing Security

Both Standard and Pro MDAemon have multiple security tools for protecting themselves and their user accounts. Its security services stay out of the way as much as possible while guarding against unauthorized access, message tampering and spam.

MDaemon's protective measures include content filtering, DNS black lists, SSL/TLS, relay controls, tarpitting, spam detection, reverse lookups, grey listing, black listing, IP and host screening, SPF, Sender ID, HashCash, Domain Keys and Domain Keys Identified Mail (DKIM).

To reduce the risk of blocking legitimate messages, the overall security approach uses heuristic and Bayesian analysis to determine the likelihood of a message containing falsified sender addresses or undesirable content, for example.

MDaemon also makes extensive use of realtime blackhole lists, exception lists and

- Shared user folders.
- Public folders.
- Spam detection, filtering and blocking.
- IP management, trusted hosts, black lists and white lists
- Active Directory monitoring, LDAP or ODBC options for account management.
- Bandwidth throttling.
- IP cache option to reduce DNS look ups.
- Header translation for outbound mail.
- Signature files for all messages or by domain.
- Account-specific auto responders.
- Scheduled delivery and priority mail.
- Mailing lists for discussion groups and announcements.
- Gateways for hosting mail for others.
- Queue management for local and remote queues.

## Requirements

Despite its obvious power and flexibility, MDAemon has minimal hardware and software requirements.

Software: Windows 2000 and later.

CPU: Pentium II 450 MHz

Memory: 256 MB RAM

Disk Space: 30 MB, plus more for mail storage

Network: TCP/IP with connection to Internet, Intranet or LAN

Alt-N Technologies  
2550 SW Grapevine Parkway, Suite 150  
Grapevine, Texas 76051  
Phone: (817) 601-3222  
Fax: (817) 601-3223  
http://www.altn.com/

